

## Original Article

# Relationship between the Pre-ECT Bispectral Index and seizure duration in electroconvulsive therapy under propofol anesthesia

Hae-Lan Jang

*Department of Nursing Joongbu University, Geumsan 32713, Korea*

**Electroconvulsive therapy (ECT) has been used in the treatment of psychiatric disorders such as schizophrenia and major depressive disorders which are resistant to pharmacologic therapy. Seizure duration is a major determinant of treatment efficacy in ECT. Patients requiring ECT need effective sedation and neuromuscular blockade to prevent discomfort and the possibility of fractures of bones during ECT. The Bispectral Index (BIS) reflects the clinical degrees of consciousness during sedation and hypnosis with intravenous and inhalational anesthesia. This study was performed to investigate if there is any correlation between the BIS and seizure duration in the patients with psychiatric disorders during ECT under propofol and succinylcholine anesthesia. A total of 11 patients with schizophrenia and major depressive disorders were monitored for BIS, electroencephalogram (EEG) and seizure duration. Seizure was detected using isolated forearm technique (IFT). The BIS was recorded at four specific time points (baseline before the start of anesthetic induction, before ECT (Pre-ECT BIS), at eye opening to verbal command and at 5 minutes after eye opening). Awake baseline value of the BIS showed significant changes depending on the depth of anesthesia at specific time points after propofol was administered. Pre-ECT BIS was positively correlated with seizure duration.**

**Key words:** ECT, Psychiatric disorders, BIS, EEG, Anesthesia

## Introduction

The Bispectral Index (BIS), a derived variable of the electroencephalography (EEG), has also been suggested to reflect the level of sedation and hypnosis with intravenous and inhalational anesthesia [1,2]. This electrophysiological variable is considered to provide useful information regarding brain stem function because it is a marker reflecting the activity degree of cerebral cortex. It provides values of a numerical expression quantified over level of consciousness, enabling objective assess-

ment of patients' brain condition. There have been some studies investigating that the BIS can reflect the level of consciousness in psychiatric patients during ECT. These studies are mainly about the changes and the accuracy of the BIS in predicting the hypnotic degrees in those patients who undergone ECT that may make the BIS bizarre (EEG abnormality) [3,4]. It was also found that ECT may decrease the BIS during ECT under propofol anesthesia. ECT has been broadly used in the treatment of schizophrenia and major depressive disorders which are resistant to pharmacologic therapy and the effect of ECT are alleged to correlate with seizure duration. This prospective and observational study was performed with the aim of determining if there is any correlation between these Pre-ECT BIS and seizure duration in the patients who undergo ECT.

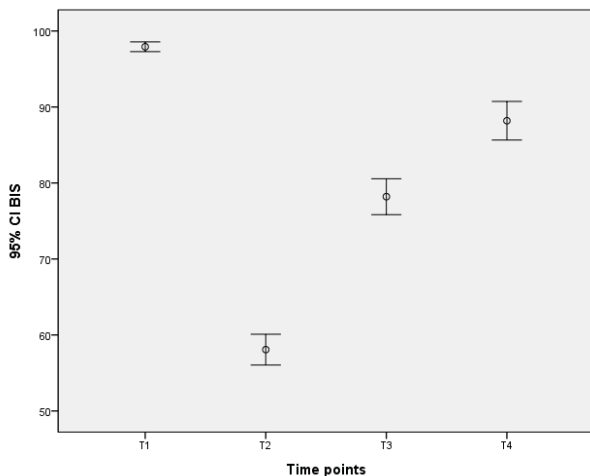
## Patients and Methods

Eleven patients (aged 21-67 years) with schizophrenia and major depressive disorders which are resistant to pharmacologic treatments were prospectively evaluated for the BIS and seizure duration. All patients fasted for at least 6 hours before ECT. All other aspects of pre-procedural care were routine. Before the induction of anesthesia routine monitorings were initiated and an intravenous line secured. The EEG electrodes were applied to the forehead, temple and mastoid of the patient, then connected to the BIS monitor. Anesthesia was induced with a propofol (100-120 mg i.v.) and mechanical ventilation using 100% oxygen was adjusted for end-tidal concentration of carbon dioxide to be maintained between 30 and 35 mmHg, and a pneumatic tourniquet was applied on an arm for isolated forearm technique (IFT) [5-11] for the detection of arm movement during ECT. Before ECT started the tourniquet was inflated to a pressure of 200 mmHg and succinylcholine (1 mg/kg i.v.) was administered for neuromuscular blockade. At the end of procedures patients were verbally prompted to open

and squeeze the fingers of patient's hand in 30 seconds intervals. ECT was done 8-10 times per patient every other day depending on the clinical responses. But the data were obtained from the first five electroconvulsive therapies in a row. The BIS was measured at four specific time points (T1=baseline before the start of induction, T2=before ECT (Pre-ECT), T3=at eye opening to verbal command and T4=at 5 minutes after eye opening) with a BIS monitor, Model A-3000 vista™ (Aspect Medical Systems, Norwood, USA). The correlation between the BIS and the seizure duration was determined using Pearson's correlation coefficient. Each variable was recorded simultaneously. Mean values of measurements of the BIS made over the study period were compared for each specific time points. Statistical analysis was performed on an IBM-compatible computer with standard statistical software packages (SPSS For Windows, version 22.0). Data were analyzed using Kruskal-Wallis test and Mann-Whitney test. A value of  $P < 0.05$  was considered statistically significant. All patients were interviewed in the recovery area for any memory about procedures. Information concerned with the monitoring modalities was provided to patients' family or next of kin and informed consent signed after obtaining approval of Institutional Review Board before the commencement of study.

## Results

Awake baseline value (T1) of the BIS showed significant time dependent changes from  $97.92 \pm 2.3$  to  $58.07 \pm 7.5$  before ECT (T2, Pre-ECT),  $78.20 \pm 8.7$  at eye opening to verbal command (T3) and  $88.19 \pm 9.2$  at 5 minutes after eye opening (T4). ( $p < 0.001$ , Fig. 1). The Pre-



**Fig. 1.** Changes of BIS at specific time points (T1~T4). T1=baseline before the start of induction, T2=before ECT (Pre-ECT), T3=at eye opening to verbal command and T4=5 minutes after eye opening.

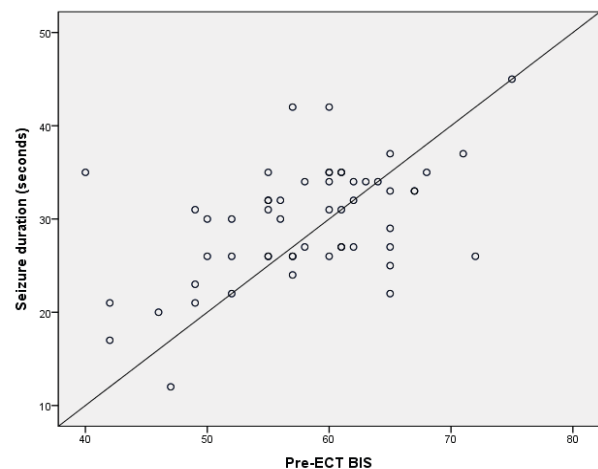
ECT BIS was positively correlated with seizure duration ( $p < 0.001$ ,  $r = 0.507$ , Fig. 2).

## Discussion

Patients requiring ECT need effective sedation and neuromuscular blockade to prevent discomfort and the possibility of fractures of bones during ECT. Seizure duration is considered as a major determinant of treatment efficacy in ECT. This study was based on a simple clinical protocol to monitor motor seizure of the patients with psychiatric disorders such as schizophrenia and major depressive disorders.

BIS is calculated from a multivariate regression model depending on three variables (burst suppression ratio, relative  $\alpha/\beta$  ratio and bicoherence of the EEG). The BIS, as an electroencephalographic variable, provides continuous data between 0 and 100 indirectly reflecting cerebrocortical and subcortical activities as it is based on EEG. EEG has effectively been used to evaluate the depth of consciousness of the patients with mental change and to predict prognosis according to EEG patterns [12,13]. BIS was developed to be applicable to normal surgical patients. Monitoring of the BIS during ECT may not reliably reflect the clinical degrees of consciousness. Furthermore ECT may increase electromyographic (EMG) activity, especially in frontalis muscle activity. For this reason, during ECT the BIS may be fluctuating, however, it may not be artifacts but rather clinical state changes [14,15].

In our study, after patients lost consciousness, succinylcholine was given to prevent bone or tooth fractures by muscle jerk with ECT. There have been some reports investigating the effects of neuromuscular blocking agents on the depth of anesthesia monitored by BIS. Flaishon



**Fig. 2.** Scattered plots of Pre-ECT BIS and seizure duration.

and his colleagues suggested that BIS might be able to provide a reliable method in predicting the probability of recovery of consciousness from anesthesia using thio-pental or propofol in the patients paralyzed with neuromuscular blockers [16]. In their report, although they did not mention the direct effect of neuromuscular blocking agent on the BIS, it was recognizable that the capability of BIS to predict the probability of a patient being aware was not affected by neuromuscular blockade. On the contrary, Messner and his colleagues were very doubtful of the capability of the BIS indicating the level of consciousness in paralyzed state because in their study using volunteers neuromuscular relaxation decreased the BIS to very low values in fully conscious state, which were generally accepted as unconscious state [17,18]. It implies that BIS might not be a sensitive measure of the depth of sedation and detector of awareness in subjects who were totally paralyzed with a neuromuscular blocking agent. The current study was not designed to clarify these conflicting results about the capability of the BIS in detecting awareness in paralyzed condition, however, it may be carefully recognizable that the BIS could be applied to detect awareness of paralyzed patients undergoing ECT. Electromyographic activity may influence surface EEG and the BIS. In our study spontaneous facial muscle EMG activity was abolished by succinylcholine given before ECT, therefore the BIS was not affected by EMG activity.

There has been some research investigating the relationship the BIS, and motor and EEG seizure durations [19,20]. In their studies positive correlations were found between Pre-ECT BIS, and motor and EEG seizure duration in spite of wide correlation degrees between 0.4-0.73. In the present study we also found that the BIS was positively correlated with the Pre-ECT BIS. In conclusion, the BIS monitoring might be useful in predicting seizure duration in psychiatric patients requiring ECT.

## Acknowledgements

This paper was supported by Joongbu University Research & Development Fund, in 2017.

## ORCID

Hae-Lan Jang, <http://orcid.org/0000-0003-2864-5727>

## References

- Gajraj RJ, Doi M, Mantzaridis H, Kenny GN. Analysis of the EEG bispectrum, auditory evoked potentials and the EEG power spectrum during repeated transitions from consciousness to unconsciousness. *Br J Anaesthesiol* 1998;80:46-52.
- Singh H. Bispectral index (BIS) monitoring during propofol-induced sedation and anaesthesia. *Eur J Anaesthesiol* 1999 Jan;16:31-36.
- Tanabe T, Sakai T, Mi WD, Matsuki A. Electroconvulsive therapy decrease bispectral index-a case report. *Masui. Japanese J Anesthesiol* 1998; 47: 1096-1098.
- Umeda E, Nakai T, Satoh T, Kazama T. Bispectral index monitoring during anesthesia with propofol for electroconvulsive therapy Masui. *Japanese J Anesthesiol* 2004 Jul;53:810-812.
- Tunstall ME. Detecting wakefulness during general anaesthesia for Caesarean section. *Br Med J* 1977(May) 21; 1:1321.
- Tunstall ME. The reduction of amnesic wakefulness during Caesarean section. *Anaesthesia* 1979; 34:316-319.
- Russell IF. Auditory perception under anaesthesia. *Anaesthesia* 1979 Feb;34:211.
- Schultetus RR, Hill CR, Dharamraj CM, Banner TE, Berman LS. Wakefulness during Caesarean section after anesthetic induction with ketamine, thiopental or ketamine and thiopental combined. *Anesth Analg* 1979; 65:723-728.
- Russell IF. Comparison of wakefulness with two anaesthetic regimens. Total i.v. v. balanced anaesthesia. *Br J Anaesth* 1986 Sep;58:965-968.
- Russell IF. Midazolam-alfentanil: an anaesthetic? An investigation using the isolated forearm technique. *Br J Anaesth* 1993;70:42-46.
- Czarko K, Kwiatosz-Muc M, Fijałkowska A, Kowalczyk M, Rutyna R. Intraoperative awareness-comparison of its incidence in women undergoing general anaesthesia for caesarean section and for gynaecological procedures. *Anaesthesiol Intensive Ther* 2013 Oct-Dec;45:200-204.
- Brenner RP. The electroencephalogram in altered states of consciousness. *Neurol Clin* 1985(Aug); 3: 615-631.
- Lowenstein DH, Aminoff MJ. Clinical and EEG features of status epilepticus in comatose patients. *Neurology*, 1992(Jan); 42; 1:100-104.
- Billard V, Gambus PL, Chamoun N, Stanski DR, Shafer SL. A comparison of spectral edges, delta power, and bispectral index as EEG measures of alfentanil, and midazolam drug effect. *Clinical Pharmacol Ther* 1997;61:45-58.
- Struys M, Versichelen L, Mortier E, Ryckaert D, De Mey JC, De Deyne C, Rolly G. Comparison of spontaneous frontal EMG, EEG power spectrum and bispectral index to monitor propofol drug effect and emer-

- gence. *Acta Anaesthesiol Scand*. 1998 Jul;42:628-636.
16. Flaishon R, Windsor A, Sigl J, Sebel PS. Recovery of consciousness after thiopental or propofol. Bispectral index and isolated forearm technique. *Anesthesiol* 1997; 86:53-56.
  17. Messner M, Beese U, Romstock J, Dinkel M, Tschai-kowski K. The bispectral index declines during neuro-muscular block in fully awake persons. *Anesth Analg* 2003; 97:488-491.
  18. Schuller PJ, Newell S, Strickland PA, Barry JJ. Re-sponse of bispectral index to neuromuscular block in awake volunteers *Br J Anaesth*. 2015 Jul;115 Suppl 1:i95-i103.
  19. White PF, Rawal S, Recart A, Thornton L, Litle M, Stool M. Can the bispectral index be used to predict seizure time and awakening after electroconvulsive therapy? *Anesth Analg* 2003;96:1636-1639.
  20. Nishihara F, saito S. Pre-ictal bispectral index has a positive correlation with seizure duration during elec-troconvulsive therapy. *Anesth Analg* 2002;94:1249-1252.